



AUSTRALASIAN NEUROLOGICAL CONFERENCE & EXPO 2025

1ST - 2ND MAY

PERTH CONVENTION &
EXHIBITION CENTRE
WESTERN AUSTRALIA

REIMAGINING BRAIN AND NERVOUS SYSTEM HEALTH AND DISABILITY



PROGRAM



Neurological Council of WA

STRATEGIC PARTNERS AND GOLD SPONSORS



SILVER SPONSOR



BRONZE SPONSORS



BURSARY SPONSORS

SUPPORTING SPONSORS

WESTERN AUSTRALIA | BUSINESS EVENTS PERTH

KAILIS



AUSTRALASIAN
NEUROLOGICAL
CONFERENCE &
EXPO 2025

REIMAGINING BRAIN & NERVOUS SYSTEM HEALTH & DISABILITY



Welcome

Thank You to all delegates for your interest, contribution and support of the neurological community.

The Australasian Neurological Conference & Expo 2025 is proudly brought to you by the Neurological Council of WA, a not-for-profit organisation dedicated to improving health and well-being by reducing the incidence and impact of brain and nervous system disorders.

We are pleased to deliver this event in collaboration with our many not-for-profit member organisations and our key strategic partners, The Perron Institute for Neurological & Translational Sciences and Neurological Alliance Australia, and with the valued support of our generous sponsors, exhibitors and presenters.

ACKNOWLEDGEMENT OF COUNTRY

The Neurological Council of WA acknowledges the Traditional custodians of the land on which we meet, the Whadjuk people of the Noongar Nation, and all Traditional Owners of Country throughout Western Australia, and pays respect to Elders past and present. We recognise the strength, resilience and significant importance of their cultural heritage, values and beliefs and how these contribute to the positive health, wellbeing and prosperity of the whole Australian community.

CHAMPIONING DISABILITY, DIVERSITY AND INCLUSION

We recognise and celebrate the rich diversity of human experience, including the unique perspectives and contributions of people impacted by illness and disability, and we are committed to fostering a truly welcoming, inclusive and equitable environment where everyone feels safe, valued and respected.

We are dedicated to eliminating barriers and promoting understanding, connection and empowerment so all people in our community can live happily and thrive.

Our Challenge

At least one in four Australians (25%) live with one or more of over 600 recognised neurological disorders, with many more carers, families and communities also impacted. Neurological disorders are the leading cause of disability-adjusted life years (DALY's) and the second leading cause of death worldwide, placing unprecedented pressure on already strained health, disability, education and aged care systems. Yet despite high and growing prevalence and individual, societal and economic burden, there remains no integrated neurological strategy, little to no prioritisation or sustainable investment, and significant gaps in availability, equity and access to affordable public health and community-based neurological services and supports. Addressing the unique challenges and current and future needs of people impacted by neurological conditions demands a unified, multidisciplinary and intersectoral approach.

Although Australia has been slow to adopt the World Health Organization's Intersectoral Global Action Plan (IGAP) on Epilepsy and Other Neurological Disorders 2022–2031, this comprehensive 10-year roadmap arms us with the tools to reduce the stigma, burden and impact of neurological disorders while advancing brain health and improving quality of life. Together, we must:

1. Raise neurological policy prioritization and strengthen governance
2. Provide effective, timely and responsive diagnosis, treatment and care

3. Implement strategies for promotion and prevention
4. Foster research and innovation and strengthen information systems
5. Strengthen the public health approach to epilepsy.

By bringing community voices together with leaders with a neurological interest, the Australasian Neurological Conference & Expo 2025 provides a vital platform to revisit and recommit to IGAP; foster interdisciplinary thought and collaboration to reimagine our local approach to neurological health and disability policy and practice; and inform the design and implementation of equitable, sustainable and integrated care systems of care and support that align with the values, needs and reality of people living with a neurological condition now and in the future.

We invite you to make the most of this rare opportunity and join us in addressing this challenge.



Charles Watson
Chair, Neurological
Council of WA



Etta Palumbo
CEO, Neurological
Council of WA

Breaking Ground. Changing Lives.



At the Perron Institute in Perth, many of the world's brightest minds are breaking ground and changing lives.

We transform discoveries from the lab into community benefits – safely and quickly.

We're aware that many people worldwide suffer from

conditions without effective treatments, waiting and hoping for breakthroughs.

Our research and clinical trials aim to revolutionise neurological treatments through personalised, precision health – tailoring therapies to individuals and groups based on their needs.

Discover more about us at
perroninstitute.org



NEUROLOGICAL PEAK BODY LEADERSHIP & SECTOR SUPPORT:

Since establishing Australia's first neurological hub in 1991, The Niche QEIIIMC Centre for Neurological Support, we continue to bring the neurological community together to strengthen support for people living with neurological conditions through collaboration, leadership forums, advocacy, awareness campaigns, conferences and events.

The Neurological Council of WA is a not-for-profit health peak dedicated to advancing the health and wellbeing of people living with neurological conditions. For over 30 years, the Neurological Council has worked in collaboration with consumers, carers, researchers and professionals across all sectors to champion brain health and reduce the incidence and impact of brain and nervous system disorders.

NEUROCARE AND NEUROKIDS:

With offices and nurses across WA, we offer state-wide community-based neurological nursing and system navigation, a NeuroNurse telehealth helpline, out-reach services and peer-led support groups for Western Australians of all ages living with any neurological condition or symptom.



Neurological Council of WA

ncwa.com.au | 1800 645 771



Program - Day 1

Thursday 1 May 2025			Speaker	Room
8:15am - 8:45am		⚙️ REGISTRATION ⚙️ Neuro Expo ⚙️ Poster Gallery ⚙️ Neuro Nouveau: The Art Behind the Science ⚙️ Networking		Foyer / River Room
8.45am		Master of Ceremonies Welcome & Acknowledgements	Ms Karen Tighe, Encephalitis Advocate & Media Commentator	Plenary
8.50am		Neurological Council of WA Chairman’s Address	Emeritus Professor Charles Watson, Chair, Neurological Council of WA	Plenary
9.00am		Official Conference Opening	Hon Hannah Beazley BA MLA Minister for Disability Services; Volunteering; Youth; Local Government; Gascoyne (invited TBC)	Plenary
9.10am		Keynote Address - Neurological Alliance UK Advoacy, IGAP & EU Brain Health Plans	Ms Georgina Carr - CEO, Neurological Alliance UK	Plenary
9.35am		Keynote Address - Neurological disease in Australia: Under-counted, under-valued, under-funded	Mr Rohan Greenland, Chair Neurological Alliance Australia, CEO MS Australia	Plenary
10.00am		Neurological Disability and the Impact of NDIS Reforms	Ms Mhairi Cowden, Deputy Director General Disability, Department of Communities	Plenary
10.25am		Sponsor Acknowledgement - Perron Insitute for Neurological and Translational Sciences	Perron Insitute for Neurological and Translational Sciences	Plenary
10:30am - 11:00am		⚙️ MORNING TEA ⚙️ Neuro Expo ⚙️ Poster Gallery ⚙️ Neuro Nouveau: The Art Behind the Science ⚙️ Networking		Foyer / River Room
11.00am		What will make quality of life better for children with intellectual disability	Professor Jenny Downs, Program Head, Development & Disability, The Kids Research Institute Australia	Plenary
11.25am		Practical Programs for Parkinsons: Clinics, Boxing & Yoga	Prof David Blacker AM, Neurologist and Researcher living with Parkinsons	Plenary
11.50am		Risk Prediction Models in Dementia Prevention: From Clinical Practice to Public Health Policy	Prof Blossom Stephan (PhD), Chair of Dementia (Curtin University & Dementia Australia)	Plenary
12.15pm		What Do Patients Really Want?	Dr Bruce Powell, Honorary Research Fellow, Monash University, Author & Brain Injury Survivor	Plenary
12.40pm		Sponsor Acknowledgement - Carers WA	Mr Paul Rogers, Carers WA	Plenary
12:50pm - 1:50pm		⚙️ LUNCH ⚙️ Neuro Expo ⚙️ Poster Gallery ⚙️ Neuro Nouveau: The Art Behind the Science ⚙️ Networking		Foyer / River Room
2.00pm	Choice of breakout session	1. Brightwater – Finding Solutions with People Experiencing Neuro Disability	Dr Catherine Stoddart, CEO and Janet Wagland, GM Disability Services, Brightwater	Breakout 1
		2. Innovative Pathways to Personalised Mental Health Treatments Neurological Disorders	Perron Institute Panel Discussion led by Professor Jennifer Rodger with Dr Aleksandra Miljevic and Mr Bradley Roberts	Breakout 2
2.25pm	Choice of breakout session	1. Disability: Some equations for Change!	Mr Bruce Langoulant AM, Chair Meningitis Centre Australia & D-Dads	Breakout 1
		2. Facilitators and Barriers to Providing Neurological Care on Country. Lessons from the Far North Huntington’s Clinic.	Ms Melanie Clark (MPH), Department of Health WA & Monica Cazzolli (BBehSc), Huntingtons Australia	Breakout 2
2.50pm	Choice of breakout session	1. Impact for Tourette’s - Evaluation of unmet needs for Tourette syndrome and other tic conditions.	Dr Melissa Licari, Senior Research Fellow Child Disability, The Kids Research Institute Australia	Breakout 1
		2. Improving the wellbeing and service utilisation of people with Functional Neurological Disorder: A brief telehealth group program	Ms Katie K Martin, Clinical Psychologist, Department of Health WA	Breakout 2
3.15pm	Choice of breakout session	1. Joint Solutions - Developing a system of care for people with young onset dementia in Australia	Dr Bronwyn Morkham, National Director Young People in Nursing Homes Alliance and Ms Vicki Barry, Facilitator Young Onset Dementia Impact Network WA	Breakout 1
		2. Beyond the Waiting List: Nurse-Led and Community-Based Workforce & Peer Support Solutions	Ms Etta Palumbo, CEO Neurological Council of WA	Breakout 2
3.40pm		Day 1 Wrap up and Afternoon Tea / Dinner Details	Room 1 Ms Karen Tighe & Room 2 Dr Linda Friedland	Breakout
3:45pm - 4:30pm		⚙️ AFTERNOON TEA ⚙️ Neuro Expo ⚙️ Poster Gallery ⚙️ Neuro Nouveau: The Art Behind the Science ⚙️ Networking		Foyer / River Room
6:00pm - 9:00pm		Social Program - Australasian Neurological Conference Dinner - Frasers Restaurant Kings Park	Guest speaker: Dr Peter Friedland, ENT & Author of ‘Quiet Time with the President: A doctor’s story about learning to listen’	



Friday 2 May 2025			Speaker	Room
8:15am - 8:45am	⚙️ REGISTRATION ⚙️ Neuro Expo ⚙️ Poster Gallery ⚙️ Neuro Nouveau: The Art Behind the Science ⚙️ Networking			Foyer / River Room
8.45am	Greeting & Acknowledgement of Country		Ms Karen Tighe, Encephalitis Advocate & Media Commentator	Plenary
8.55am	Day 2 Welcome		Dr Linda Friedland, Deputy Chair, Neurological Council of WA	Plenary
9.00am	Keynote Address		Dr Shirley Bowen, Director General WA Health	Plenary
9.30am	Exploring the Impact and Needs of Patients with Neuromuscular Disorders		Professor Merrilee Needham, Neurologist & Head of Myositis Research, Perron Institute	Plenary
10.00am	Burden, Treatment and Prevention of Stroke and other Brain Disorders - A Public Health Imperative		Dr Darshan Ghia, Neurologist, Director of Stroke, Fiona Stanley Hospital	Plenary
10.25am	<i>Sponsor Acknowledgement - Brightwater Care Group</i>		<i>Ms Janet Wagland, GM Disability, Brightwater</i>	Plenary
10:30am - 11:00am	⚙️ MORNING TEA ⚙️ Neuro Expo ⚙️ Poster Gallery ⚙️ Neuro Nouveau: The Art Behind the Science ⚙️ Networking			Foyer / River Room
11.00am	Epilepsy - An Australian Perspective:The role of Epilepsy & Other Neurological Disorders Alliance - Australia (ENDA)		Ms Carol Ireland, CEO and MD of Epilepsy Action Australia, Chair ENDA	Plenary
11.25am	Disarming Migraine: Exploring a Microvascular Target for Prevention.		Distinguished Professor John Mamo, Perron Institute	Plenary
11.50am	Fight MND - 10 years of Impact & Still Fighting		Dr Min-Yin Yap , Fight MND	Plenary
12.15pm	Recognising the Volunteer Workforce’s Critical Contribution to Neurological Health & Disability Care		Ms Tina Williams, CEO, Volunteering WA	Plenary
12.40pm	<i>Silver Sponsor Acknowledgement - Epilepsy WA</i>		<i>Ms Emma Buitendag, CEO, Epilepsy WA</i>	Plenary
12:50pm - 1:50pm	⚙️ LUNCH ⚙️ Neuro Expo ⚙️ Poster Gallery ⚙️ Neuro Nouveau: The Art Behind the Science ⚙️ Networking		Room Reconfiguration	Foyer / River Room
2.00pm	Choice of breakout session	1. Dementia Diaries: Navigating Love, Life and the System – a Carer’s Story	Professor Emeritus Kateryna Longley	Breakout 1
		2. Navigating Care: The Power of Community & Health Systems in Whole-of-Life Support	Panel discussion led by Ms Hayley Lethlean, CEO Neuromuscular WA with Ms Anna Thetford, A/Program Director Rare Care Centre & A/Prof Kristen Nowak, Office of Population & Health Genomics and Neurological Council of WA	Breakout 2
		3. The State of Childhood Dementia in Australia	Dr. Kristina Elvidge, Childhood Dementia Initiative	Breakout 3
2.25pm	Choice of breakout	1. Caring for Carers	Mr Paul Rogers, Head of Business Continuity and Growth, Carers WA	Breakout 1
		2. Promoting healthy brain ageing with non-invasive brain stimulation	Dr Alexander Tang, Neuroscientist, Healthy Brain Aging and Repair Group at UWA and the Perron Institute	Breakout 2
		3. Music in Health & in Therapy	Emeritus Professor Alan Harvey, Neuroscientist & Musician	Breakout 3
2.50pm	Choice of breakout session	1. My Future Care: Are you Good to Go? Wills, Enduring Powers, Guardianship & Administration	Workshop facilitated by Sabena Lund, Palliative Care WA	Breakout 1
		2. Improving outcomes through research – The importance of translation	Panel discussion led by Melanie Kiely, CEO, MSWA with Dr Dev Nathani, Prof Jennifer Rodger & Mr Rohan Greenland	Breakout 2
		3. Carer Conversations – “Creating resilience by increasing self-efficacy” - Frontotemporal Dementia Carer Support Groups	Ms Sarah Fox, HammondCare and Ms Gail Humphries from Dementia Support Australia WA	Breakout 3
3.15pm	Choice of breakout session	1. My Future Care: Are you Good to Go? Advance Care Planning	Workshop facilitated by Ms Sabena Lund, Palliative Care WA	Breakout 1
		2. Improving outcomes through research – The importance of translation	Panel discussion led by Melanie Kiely, CEO, MSWA with Ms Charlotte Huynh, Gavin Harper & Ellen-May Eaton	Breakout 2
		3. The Role of Exercise Medicine in the Management of ADHD	Ms Katie Stewart BHMS, Accredited Exercise Physiologist, Chronic Care Australia	Breakout 3
3.40pm	<i>Day 2 Wrap & Transition to Foyer</i>		<i>Room 1 - MC Ms Pam Lewis, Room 2 - MC Dr Linda Friedland, Room 3 - MC Ms Karen Tighe,</i>	Breakout Rooms
3:45pm - 4:00pm	Conference Closing Ceremony - Group Photo and Kailis Jewellery Door Prize Draw			Foyer / River Room



AUSTRALASIAN
NEUROLOGICAL
CONFERENCE &
EXPO 2025

REIMAGINING BRAIN & NERVOUS SYSTEM HEALTH & DISABILITY

Our Speakers



Ms Karen Tighe

*MC, Former ABC Sports Broadcaster,
Encephalitis Ambassador*

Karen Tighe is a leading media professional. Karen is survivor of HSV-1 Encephalitis. She is now an advocate for encephalitis awareness, using her platform to share personal insights with the public and health professionals, and support other encephalitis survivors.



Emeritus Professor Charles Watson AM

Chairman, Neurological Council of WA

Professor Watson is a world-renowned eminent neurobiologist, neurosciences author and public health physician, specialising in brain and spinal cord mapping. Charles was made a member of the Order of Australia for his work in brain research and public health in 2004.



Ms Georgina Carr FRSA

CEO, The Neurological Alliance UK

Georgina Carr leads the Neurological Alliance UK, advocating for people with neurological conditions. Ms Carr sits on NHS and government committees and formerly led policy at the MS Society. She champions reform to improve care, treatment and awareness.



Mr Rohan Greenland BA

*Chair, Neurological Alliance Australia;
CEO, MS Australia*

Rohan Greenland is an International Progressive MS Alliance managing committee member. He previously served as CEO at Palliative Care Australia, in leadership roles at National Heart Foundation, AMA and PHAA and working with Federal Ministers and politicians.



Dr Shirley Bowen B.Med MM FRACP FACSHM FRACMA (Hon) *Director General of WA Health*

Dr Shirley Bowen is a skilled physician with extensive health service delivery experience. Shirley previously served as CEO of North Metropolitan Health Service and St John of God Subiaco Hospital, CMO of the ACT, and Dean of the School of Medicine, UNDA.



Dr Mhairi Cowden

*Deputy Director General Disability,
WA Department of Communities*

With a PhD in children's rights, Dr Cowden has leadership experience across nonprofit organisations, Government and private sector. She has worked nationally on disability services and reform, including NDIS, disability policy and service design.



Professor Merrilee Needham

*Consultant Neurologist, Foundation
Professor of Neurology at Fiona Stanley
Hospital, Murdoch University and Notre
Dame University.*

Professor Merrilee Needham is a neurologist and Head of Myositis Research at the Perron Institute. She specialises in neuromuscular disorders, advancing understanding and treatment of myositis through research and clinical leadership.



Dr Darshan Ghia

*Stroke Neurologist,
Fiona Stanley Hospital*

Dr Darshan Ghia is the inaugural head of the Stroke Unit at Fiona Stanley Hospital. Trained in Melbourne and Sydney, he leads clinical stroke trials, contributes to national networks, and consults privately, supporting multicultural communities in multiple languages.



Distinguished Professor John Mamo

*Head of Neurovascular and Metabolic
Diseases, Perron Institute*

Professor John Mamo is a neurovascular researcher at the Perron Institute and Curtin University. His work explores brain capillary function and its role in neurodegenerative disease. A leading physiologist, he translates lab research into clinical trials for brain health.



Professor Jennifer Rodger *Head of Brain Plasticity Research, Perron Institute*

Professor Jennifer Rodger's leads a team of researchers focused on non-invasive brain stimulation for neural repair. A UWA senior lecturer and global neuroscience collaborator, she is internationally recognised for her research in brain regeneration.



Emeritus Professor Alan Harvey MA PhD

Neuroscientist & Musician

Alan Harvey is a neuroscientist known for his work on nervous system repair and music's impact on the brain. He is a senior honorary research fellow at UWA, the Perron Institute and Lions Eye Institute, and author of Music, Evolution and the Harmony of Souls.



Professor David Blacker AM MB BS FRACP

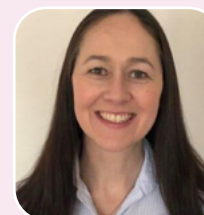
*Neurologist & Researcher,
Perron Institute*

Professor David Blacker is dedicated to improving life with Parkinson's through innovative programs. Diagnosed in 2018, he shares his journey through writing and speaking. Formerly Medical Director at the Perron Institute, he advocates for patient-centred research and care.



Professor Blossom Stephan PhD *Chair of Dementia, Curtin University and Dementia Australia*

Professor Blossom Stephan is an internationally recognised expert in dementia risk and prevention. She leads the Curtin-Dementia Australia Dementia Centre of Excellence and advises on research translation, aiming to improve brain health and care strategies.



Emeritus Professor Kateryna Longley *Emeritus Professor, Murdoch University*

Professor Kateryna Longley is a distinguished academic and Pro Vice Chancellor at Murdoch University. With board roles spanning data governance and environmental management, she chairs North West Shelf Flatback Turtle Conservation Research Program.



Mr Bruce Langoulant AM *Co-Founder and Chair, Meningitis Centre Australia*

Bruce Langoulant AM has led MCA since 1992. Bruce is Chairperson of the WA Disability Services Commission Board and a trustee and founding President of The Confederation of Meningitis Organisations LTD UK. He was awarded the Order of Australia in 2019.



Dr Catherine Stoddart PSM, RN, BSCN, MPM, MBA, DBA, FACHSM, MAICD

CEO, Brightwater Care Group

Dr Catherine Stoddart's leadership spans roles in NT Health, WA Health and the NHS. She was awarded the 2024 Curtin Alumni Award from the faculty of Health sciences. She also a Telstra Businesswoman of the Year and Public Service Medical recipient.



Ms Janet Wagland

*General Manager Disability Services,
Brightwater*

Janet Wagland has over 30 years' experience in neurological disability support. As GM of Disability Services at Brightwater, she leads innovative models in rehab, supported living, therapy and behaviour support, championing person-centred care.



Dr Bruce Powell MBBS MRCP FRCA FANZCA

*Honorary Research Fellow,
Monash University*

Following a severe cycling accident and brain injury, Dr Bruce Powell became a leading advocate for patient-centred recovery. A former ICU head, he now speaks and writes about identity, agency and healing, drawing from both medical and lived experience.



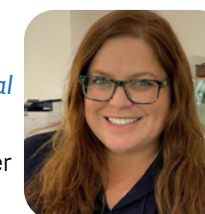
Ms Tina Williams *CEO, Volunteering WA*

Tina Williams has led Volunteering WA since 2016. With a background in health and community services, she champions sustainable, inclusive volunteering. Tina also serves as a WA Charity Direct Trustee and initiated the Volunteer Community Reference Group.



Ms Melanie Clark BPsych (Hons), MPH *North Metropolitan Health Service Mental Health*

Melanie Clark is a public health researcher focused on Huntington's disease and neuropsychiatric care. She leads outreach in remote Aboriginal communities and founded the Aboriginal Huntington's Working Group to promote culturally safe health solutions.





AUSTRALASIAN
NEUROLOGICAL
CONFERENCE &
EXPO 2025

REIMAGINING BRAIN & NERVOUS SYSTEM HEALTH & DISABILITY

Our Speakers



Ms Katie Stewart BHMS, ESSAM, AEP

Managing Director & Co-Founder, Chronic Care Australia

Katie Stewart is an Accredited Exercise Physiologist and Managing Director of Chronic Care Australia. She uses exercise to manage chronic conditions and improve mental health. Katie also teaches at Curtin University and advises the Heart Foundation WA.



Ms Katie Krysteen Martin

Senior Clinical Psychologist Coordinator, Royal Perth Hospital

Katie Krysteen Martin leads WA's first interdisciplinary virtual group program for Functional Neurological Disorder and coordinates psychological care and stakeholder engagement to improve outcomes for people with complex neurological conditions.



Dr Kristina Elvidge PhD

Head of Research, Childhood Dementia Initiative

Dr Kristina Elvidge research focused on advocacy and accelerating treatments. With a PhD in molecular biology and a background in rare disease research, she builds evidence and networks to improve care for affected children and families.



Ms Hayley Lethlean

CEO, Neuromuscular WA

Hayley Lethlean has over 20 years' not-for-profit experience advocating for people living with rare conditions. Hayley drives co-designed, person-centred services and builds strong partnerships to improve access, support and outcomes across the community.



Dr Alex Tang

Head, Healthy Brain Ageing and Repair Lab, Perron Institute

Dr Alex Tang leads research at the Perron Institute and UWA into how ageing affects memory and learning. He explores the cellular basis of neurological conditions like stroke, aiming to develop new interventions that support brain health across the lifespan.



Ms Sarah Fox

Project Lead, Dementia Centre, HammondCare

Sarah Fox leads a national carer support program at Dementia Centre, Hammond Care. With over 22 years' experience, she specialises in dementia, aged and palliative care, and applies a holistic, person-centred approach to improving care outcomes.



Dr Min-Yin Yap

Care Grants Manager, FightMND

Dr Min-Yin Yap manages FightMND funding support initiatives for people with motor neurone disease. With a biomedical research background, she ensures care programs are responsive and impactful, improving quality of life for individuals and families.



Dr Bronwyn Morkham

National Director, Young People in Nursing Homes Alliance

Dr Bronwyn Morkham advocates for young people with disability, working to end their placement in aged care. She drives policy reform across NDIS, health and housing, and contributes to advisory bodies at state and federal levels.



Ms Vicki Barry

Facilitator and Founder, Young Onset Dementia Impact Network WA

Vicki Barry created the YODyssey art exhibition. Drawing on her experience as a care partner, she advocates for people with young onset dementia and actively contributes to policy reform through Alzheimer's WA and Dementia Australia.



Ms Carol Ireland

CEO, Epilepsy Action Australia

Carol Ireland has 35 years in not-for-profit human services, promotes national collaboration through Epilepsy and Other Neurological Disorder Alliance (ENDA) and is a strong advocate for the medical cannabis movement for managing challenging, drug-resistant epilepsy.



Ms Sabena Lund

Community Educator, Palliative Care WA

Sabena Lund provides community education on end-of-life care with Palliative Care WA. With a background in counselling and adult education, she helps individuals and families engage in open, meaningful conversations about palliative care, death and grief.



Dr Aleksandra Miljevic

Early Career Researcher, Perron Institute for Neurological and Translational Science

Dr Aleksandra Miljevic coordinates the WA TMS Network and researches brain communication in youth depression. Her work focuses on biomarkers and brain stimulation therapies to improve mental health care through personalised treatment.



Dr Bradley Roberts

PhD Candidate, Perron Institute for Neurological and Translational Science

Dr Bradley Roberts is conducting research into personalised treatments for youth depression. His research combines pharmacogenetics and brain stimulation to support effective, tailored care for young people navigating anxiety and depression.



Ms Gail Humphries

Family Liaison Officer, Dementia Support Australia

Gail Humphries supports families as a Liaison Officer with Dementia Support Australia. With a counselling background, she promotes person-centred, holistic care and helps families navigate the dementia journey with dignity, connection and empowerment.



Associate Professor Kristen Nowak

Director, Population Health Genomics, WA Health

A/Prof Kristen Nowak leads WA Health genomic and rare disease policy and research overseeing the implementation of the WA Genomics strategy 2022-2032. Nationally, she contributes to Rare Voices Australia and Health Technology and Genomics Collaboration.



Ms Anna Thetford

A/Program Director (clinical) Rare Care Health Centre, Child and Adolescent Health

Anna is a senior Registered Nurse and an integral leader in paediatric care at the Comprehensive Rare Care Centre. Specializing in supporting children with complex disabilities and chronic conditions, she was awarded a 2024 Churchill Fellowship.



Dr Melissa Licari

Senior Research Fellow Child Disability, The Kids Research Institute Australia

Melissa is an advocate for paediatric movement disorders on the boards of Developmental Coordination Disorder (DCD) Australia Inc., Australian DCD Alliance, and is the Australian representative on the board for the International Society for Research into DCD.



Ms Monica Cazzolli

Team Leader, National Community Programs, Huntington's Australia

Monica is a Huntington's Disease Specialist passionate about delivering collaborative, person-centred care, particularly for youth people and in regional and remote communities, including culturally responsive care via a specialised HD clinic for Aboriginal Australians.



Ms Melanie Kiely

CEO, MSWA

Ms Melaine Kiely is a Non-Executive Director at National Disability Services and AIA Health Pty Ltd. She previously served as CEO of Good Sammy Enterprises and a Non-Executive Director at AFG Australian Finance Group, Black Dog Institute and Silver Chain Group.



Dr Dev Nathani

Consultant Neurologist, Perron Institute and Joondalup Health Campus

Dr Nathani is a Consultant Neurologist and Neurophysiologist with an interest in Neuromuscular Medicine. He completed a Master of Philosophy (Medicine) at the University of Sydney in 2019, evaluating the role of nerve biopsy in modern neurodiagnostics.





AUSTRALASIAN
NEUROLOGICAL
CONFERENCE &
EXPO 2025

REIMAGINING BRAIN & NERVOUS SYSTEM HEALTH & DISABILITY

Our Speakers

Hon. Hannah Beazley BA MLA (TBC)

Minister for Disability Services; Youth; Volunteering; Local Government

Hannah was elected to State Parliament in 2021. Her past appointments include Minister Assisting the Minister for Training & Workforce Development, Parliamentary and Joint Committees, Caucus Secretary and Parliamentary Secretary to Ministers Dawson & Carey.



Paul Rogers

Head of Business Continuity and Growth, Carers WA

With lived experience as a carer and over 20 years Human and Community Services industry experience in Australia and the UK, Paul works to reduce systemic barriers to access and inclusion, and is a strong advocate for the wider adoption of 'ownership of voice' within all human service delivery environments.



Professor Jenny Downs

Program Head, Development & Disability, The Kids Research Institute Australia

With a clinical background in paediatric physiotherapy, Jenny currently researches child disability with a focus on rare disorders at the The Kids Research Institute Australia, co-leads the Think Big Neurodevelopmental Disorders, and is a member of the PCH Ethics Committee and Kalparrin Board.



MSWA BREAKOUT SESSION PANELLISTS:

- Charlotte Huynh – Speech Language Pathologist MSWA
- Gavin Harper – Lived experience
- Ellen-May Eaton - Lived experience

BREAKOUT SESSION MCs:

- Dr Linda Friedland, Deputy Chair, Neurological Council of WA
- Ms Pam Lewis, Clinical Governance Committee Chair, Neurological Council of WA

CONFERENCE DINNER GUEST SPEAKER:

Professor Peter Friedland

Author of *'Quiet Time with the President: A doctor's story about learning to listen'*, a book that outlines the ENT Surgeon's life-changing relationship with Nelson Mandela. Peter is a Fellow of Royal Australian College of Surgeons, the College of Surgeons (Otorhinolaryngology) South Africa, Head of Department Otolrhinolaryngology Head Neck Skullbase Surgery, Sir Charles Gairdner Hospital and Professor with the School of Surgery at The University of Western Australia.



Our Sponsors and Supporters

STRATEGIC PARTNERS & GOLD SPONSORS

Strategic Partner



Neurological Alliance Australia

The Neurological Alliance Australia is a collective of not-for-profit peak or national patient organisations representing adults and children living with a neurological or neuro-muscular conditions or neurological disorders in Australia.
<https://neurologicalalliance.org.au/>
info@neurologicalalliance.org.au

Gold Sponsor



Carers WA

Carers WA is the peak body supporting unpaid family carers across Western Australia. Carers WA provide a wide range of services to support carer wellbeing, including advocacy, respite, counselling, training, and peer support. Their mission is to improve recognition, understanding, and outcomes for carers in all life circumstances.
<https://www.carerswa.asn.au/>
1300 227 377
info@carerswa.asn.au

Strategic Partner and Gold Sponsor



Perron Institute

As Western Australia's premier neuroscience research institute, the Perron Institute focuses on translating neurological research into clinical treatments. Perron Institute addresses conditions like Parkinson's, MS, and stroke, offering specialist clinics and collaborating with global institutions to advance personalised medicine.
www.perroninstitute.org
(08) 06457 0312
info@perron.uwa.edu.au

Gold Sponsor



Brightwater Care Group

Brightwater Care Group is a long-standing Western Australian not-for-profit offering disability, aged care, and retirement services. With over 120 years of experience, Brightwater Care Group multidisciplinary team provides person-centred care across supported accommodation, rehabilitation, and community programs, with a strong commitment to innovation and compassionate service delivery.
<https://brightwatergroup.com/>
1300 223 968
(08) 9228 7400
welcom@brightwatergroup.com

SILVER SPONSOR



Epilepsy WA

Epilepsy WA has supported West Australians living with epilepsy for over 60 years. They provide vital services for the 28,000 people living with epilepsy in WA, including the newly diagnosed. Their work focuses on education, advocacy, and reducing stigma while helping individuals better manage their condition and reduce epilepsy-related risks.
<https://www.epilepsywa.asn.au/>
1300 660 880
epilepsy@epilepsywa.asn.au

BRONZE SPONSORS



Life not limits

MSWA

MSWA supports Western Australians with neurological conditions, including multiple sclerosis, through services and cutting-edge research. They fund initiatives that have advanced global understanding of neurological diseases, contributed to new tools and therapies, and provided long-term support for people living with MS and other progressive neurological conditions.
<https://mswa.org.au/>
08 6454 3222
donate@mswa.org.au
Customerservice@mswa.org.au



Sana Living

Sana Living is a registered NDIS housing provider offering Specialist Disability Accommodation across Perth, regional Western Australia, Brisbane, and Adelaide. They expand opportunities for independence, connection to community and achievement of individual goals.
<https://www.sanaliving.com.au/>
1800 951 420
08 6244 5990
info@www.sanaliving.com.au
admin@sanaliving.com.au



When you're taking care of someone close to you, it can be easy to neglect your own wellbeing. We're here to work with you to help find a balance.

1300 227 377

www.carerswa.asn.au





AUSTRALASIAN
NEUROLOGICAL
CONFERENCE &
EXPO 2025

REIMAGINING BRAIN & NERVOUS SYSTEM HEALTH & DISABILITY

Our Sponsors and Supporters



BURSARY SPONSORS



Motor Neurone Disease Association of WA

The MND Association of WA delivers person-centred support and specialist care to people affected by MND in Western Australia. The Association supports individuals living with MND as well as their families through MND advisory services, support service coordination, emotional support, education and provision of assistive equipment.

<https://www.mndawa.asn.au/>

1800 777 175

admin@mndawa.asn.au



Young People in Nursing Homes National Alliance (YPINH)

YPINH is an Australia's national peak body advocating for young people with disabilities at risk of or living in residential aged care. The alliance develops policy, facilitates cross-sector collaboration and promotes rights-based solutions across health, disability, housing and aged care sectors. It supports individuals and families through information, referrals and systemic reform efforts.

[Httpss://ypin.org.au](https://ypin.org.au)

0437178078

Info@ypinh.org.au

SUPPORTING SPONSORS



Western Australia Business Events Perth

Business Events Perth promotes Western Australia as a premier destination for conferences and incentive travel. Funded by government and partners, it offers expert support, local insight, and planning assistance to help secure and deliver successful events. With 50 years' experience, it connects organisers with venues, services and opportunities across WA.

<https://www.businesseventspertth.com/>

+ 08 9218 2900



Kailis

Kailis creates iconic Australian jewellery inspired by natural beauty. Known for clean, elegant designs, they use the finest materials, including Australian South Sea pearls, precious metals, and unique gems. Crafted in Perth and through global partners, every piece reflects Kailis's commitment to quality, provenance, and meticulous attention at every stage.

<https://www.kailisjewellery.com.au/>

+618 6245 5213

Customercare@kailis.com.au

Stores: <https://www.kailisjewellery.com.au/our-boutiques/>

Seizure First Aid & Risk Reduction

Emergency Medication (Midazolam) Training

Seizure Alert Device Display

Epilepsy Information & Resources

Epilepsy Support Groups

FREE Care Plans & More



www.epilepsywa.asn.au
epilepsy@epilepsywa.asn.au

CALL 1300 660 880



NeuroExpo Exhibitors

HOST



STRATEGIC PARTNER AND GOLD SPONSOR



GOLD SPONSORS



SILVER SPONSOR



BRONZE SPONSOR



Life not limits



Huntington's WA

Huntington's WA provides specialist support, education, and advocacy for individuals and families affected by Huntington's disease. Their services include counselling, support groups, and personalised assistance to navigate the complexities of the condition. They aim to empower families and enhance understanding of this rare, hereditary neurological disorder.

<https://huntingtonswa.org.au/>

1800 244 735

admin@huntingtonswa.org.au



Neuromuscular WA

Neuromuscular WA, formerly Muscular Dystrophy WA, supports individuals and families living with neuromuscular conditions. Since the 1960s, Neuromuscular WA has provided counselling, NDIS support, specialised equipment, and social programs. The organisation is committed to improving quality of life through advocacy, community connection and tailored services across Western Australia.

<https://neuromuscularwa.org.au/>

08 9380 3400

info@neuromuscularwa.org.au



Meningitis Centre Australia

Meningitis Centre Australia is the national peak body for advocacy, awareness and action on meningitis, meningococcal and related diseases such as pneumococcal, GSB, Hib and viral meningitis. For over 30 years Meningitis Centre Australia has been working to educate the community and defeat meningitis in its various forms that have had such a devastating impact on Australian lives.

www.meningitis.com.au

1800 250 223

info@meningitis.org.au



Dementia Australia is the national peak body representing people living with dementia, their families, and carers. They deliver support services, education, and advocacy across the country, aiming to promote understanding, reduce stigma, and improve the quality of life for the over 400,000 Australians affected by dementia.

<https://www.dementia.org.au/>

1800 100 500

helpline@dementia.org.au



Epilepsy Action Australia

Epilepsy Action Australia is a national NDIS-registered provider delivering expert support, education, and information to people living with epilepsy. Their services are led by highly trained epilepsy nurses, ensuring individuals and families receive personalised, evidence-based guidance and care, no matter where they are in the country.

<https://www.epilepsy.org.au/>

1300 37 45 37

epilepsy@epilepsy.org.au



Young Onset Dementia Impact Network of WA

The Young Onset Dementia Impact Network of WA (YODWA) is a support and advocacy network for individuals diagnosed with young onset dementia (under 65) and their care partners. It aims to facilitate information sharing, provide support, and promote social connection through various activities and events.

www.facebook.com/yodwaimpactnetwork/
+61 409 045 373

info@ypinh.org.au



Amanda Young Foundation

The Amanda Young Foundation is a non-profit organisation established in 1998 after the tragic death of Amanda Young from meningococcal septicaemia at 18. Dedicated to reducing meningococcal deaths in WA, it offers education programs, survivor support, and funds medical research. The Foundation also fosters youth leadership through initiatives like the Young Leaders Summit.

amandayoungfoundation.org.au

0409 115 056

info@amandayoungfoundation.org.au



Neurofibromatosis Association of WA

The Neurofibromatosis Association of WA provides support, information and advocacy for individuals and families affected by the condition. The organisation offers counselling, practical assistance and community connection while working to raise awareness among GPs and health professionals to improve early recognition and care.

<https://www.nfawa.org/>

08 6457 7488

info@nfawa.org

NEUROExpo

CREATIVE & INSPIRING EXHIBITS:

- 'Neuro Nouveau – The Art Behind the Science' Student Art Exhibition
- Scientific Research Poster Gallery





Neurological Council of WA

Free Call 1800 645 771 ✿ ncwa.com.au ✿ hello@ncwa.com.au

Perth (Head Office)

11 Aberdare Road
Nedlands
WA 6009
T: (08) 6285 3800

South West

16C, 42 Strickland St
Bunbury
WA 6230
T: (08) 6285 3803

Great Southern

211-217 North Road,
Centennial Park
WA 6330
T: (08) 6285 3802

Mid West

14 Sanford Street,
Geraldton
WA 6530
T: (08) 6285 3804



Brightwater Disability Services

Backed by our own Research Centre, Brightwater Care Group has been a cornerstone of support for West Australians with disabilities for decades.

We specialise in providing comprehensive services tailored to the needs of individuals with acquired or progressive neurological disabilities, including brain injury, Huntington's disease, Parkinson's disease, multiple sclerosis, and Younger Onset Dementia. Our holistic approach integrates clinical expertise with compassionate care to empower clients to live their best lives.

Our Services

- NDIS Services
- Brain Injury Rehabilitation
- Supported Independent Living
- Transitional Accommodation Program

Prepare for the possibilities

To find out how we can help you, get in touch – we're only a phone call away.

T 1300 223 968

E welcome@brightwatergroup.com

W brightwatergroup.com

